



## And Our New Chamber Board Members



**Katherine Harvey**  
AYCC

**Mickey Wing**  
Casella Waste

**Nancy Fotter**  
Camden National Bank

**Matt Hunt**  
A2Z Computing

**Churchill Elangwe-Preston**  
Mbingo Mountain Coffee

**Darlene Ratte**  
Thomas College



50 Elm Street  
Waterville, ME 04901  
TEL: 207.873.3315  
FAX: 207.877.0087  
midmainechamber.com

Gary Poulin, chair of the board  
Kimberly N. Lindlof, president & CEO



IN THIS ISSUE:

- ★ Message from the President
- ★ MMCC Meeting Calendar
- ★ New Members
- ★ People News
- ★ Member News

- ★ December BAH
- ★ 2026 White Papers
- ★ Events Calendar
- ★ December BBS
- ★ December Ribbon Cuttings
- ★ Directors' Luncheon
- ★ Community Engagement
- ★ Member Spotlight—KVCC

# LETTER FROM THE PRESIDENT

As the New Year begins, I want to thank you for your continued support. Our staff, board members, and volunteers are working hard to deliver quality events to you at which you can network to build relationships and gain customers. Primarily, we are here to serve you, help you grow your business, and market the region. To that end, if you would like to help, we are always seeking volunteers to serve on our committees to assist in shaping the direction and outcomes of your Chamber. We have committees for every event, Public Policy, Marketing & Membership, and KV Connect. Reach out to us if you have any questions and want to learn more.

A major concern of your Chamber is the dam removal issue and its predicted impact on SAPPI and the municipalities that receive taxes from the dams. Know that we are working with both The Nature Conservancy and SAPPI and will continue to advocate for “do-no-harm” to the SAPPI papermill and the subs that serve it. Several area organizations are partnering on discussions with the municipalities as well. The loss of these taxes would have a major impact on these municipalities, more than could be easily absorbed by current taxpayers.

Access and cost of health care and energy are other areas that we are keeping our eye on. For a complete list of where the Chamber stands on issues affecting your costs of doing business, please see the enclosed 2026 White Paper.

Lastly, the Mid-Maine Chamber will be introducing two new events, so stay tuned to hear more about them. Big announcements coming soon.

Have a safe and Happy New Year.

**Kimberly N. Lindlof**

Mid-Maine Chamber of Commerce  
President & CEO



# MMCC MTG CALENDAR

Jan. 9	Public Policy Committee	8:00-9:30 AM
Jan. 9	KV Connect Steering	8:00-9:00 AM
Jan. 14	Executive Committee	12:00-1:30 PM
Jan. 16	Marketing/Membership	8:00-9:00 AM

## Did you know...

Bolley's Famous Franks in Waterville will remain open and offer poutine throughout the winter months.

NexGen can offer a vulnerability scan on your network and offer solutions.

Ronald McDonald House Charities of Maine helped families save more than \$2.3 million last year on travel, lodging, and food costs while their loved one was in the hospital.

Red Claw Media features a professional podcast studio in downtown Waterville, available for creators ready to record and produce their own podcasts.

Quarry Road Trails offers over 8 miles of groomed Nordic ski trails and 5 miles of singletrack for snowshoeing, mountain biking, and hiking.

## CHAMBER ENERGY SOLAR OFFSET 2025 TOTALS

275 TREES PLANTED

1.85M PHONES CHARGED

17 TONS CO2 REDUCTION

**KSWFCUORG**  
Locations in:  
Waterville &  
Belfast  
Phone: 1-207-872-5602  
Pay with KSW

**SBS Carbon Copy**  
Printing • Copying • Mailing  
54 Main Street, Waterville, ME 04901  
207-873-7947  
www.maineprintingservices.com

**Mid-Maine Chamber of Commerce is proud to maintain an A+ rating with the Better Business Bureau.**

**Skowhegan SAVINGS**  
800.303.9511  
[www.Skowhegan.com](http://www.Skowhegan.com)

<p><b>Checking Account</b> Our checking accounts are designed to make it easy to manage your finances - wherever you're at in life.</p>	<p><b>Digital Banking</b> Our online and mobile banking make managing your finances easy, intuitive and simple.</p>	<p><b>Home Loan</b> Whether you are a first-time home buyer or an experienced homeowner, we are here to help you achieve your dreams.</p>	<p><b>Personal Loan</b> Get the money you need for whatever is next in your life with help from Maine lenders.</p>
---------------------------------------------------------------------------------------------------------------------------------------------	-------------------------------------------------------------------------------------------------------------------------	-----------------------------------------------------------------------------------------------------------------------------------------------	------------------------------------------------------------------------------------------------------------------------

## NEW MEMBERS

### Assistance Plus

PO Box 358, Fairfield, ME 04937  
800.781.0070 | Ana Campos  
W: [www.assistanceplus.com](http://www.assistanceplus.com)

### China Four Seasons Club

570 Lakeview Dr., South China, ME 04358  
207.314.1644 | Tom Rumpf  
W: [www.chinafourseasons.org](http://www.chinafourseasons.org)

### Elm City Addiction & Psychiatry PC

179 Main St., Ste. 307, Waterville, ME 04901  
207.616.0896 | Janet Zalanskas  
W: [www.elmcityaddictionandpsychiatry.com](http://www.elmcityaddictionandpsychiatry.com)

### Junior Achievement of Maine

656 Congress St., Ste. 306, Portland, ME 04101  
207.347.4333 | Michelle Prejean  
E: [www.maine.ja.org](http://www.maine.ja.org)

### Roof Restore

113 Newbury St., Portland, ME 04101  
207.572.5745 | David Mckeage  
W: [www.roofrestore5x.com](http://www.roofrestore5x.com)

### Shawn Packard for State Rep #64

18 Common St., Ste. 207B, Waterville, ME 04901  
207.431.8012 | Shawn Packard  
W: [www.packardfor64.com](http://www.packardfor64.com)

### TBL Aesthetics Day Spa

113 Newbury St., Portland, ME 04101  
207.572.5745 | Brenna Kitchen  
W: [www.thebeautyloftme.com](http://www.thebeautyloftme.com)

## Welcome New Members!

## PEOPLE NEWS

**Finance Authority of Maine** has appointed Charlotte Mace as its director of business, succeeding Jennifer Cummings, who recently joined the commercial banking team at **Camden National Bank**. Before joining FAME, Mace served as director of the Office of Bus. Dev. at the **ME Dept. of Economic and Community Development**.

Welcome aboard to Amanda Johnson, government relations specialist, with the **Maine State Chamber of Commerce**.

Ted Freeman joined the **LifeFlight of Maine** team as Chief Pilot, a critical leadership role in LifeFlight's aviation program. Having nearly 2 decades of experience, Ted is responsible for ensuring that all LifeFlight Aviation Services (LFAS) flight operations comply with Federal Aviation Regulations and LifeFlight's high standards and rigorous safety policies and will also supervise LifeFlight's team of pilots, overseeing training and ensuring aviators maintain required certifications and operational readiness.

**Thomas College** is excited to announce that the Advancement Team has officially welcomed Megan DeWald as its new Major Gifts Officer!

**KVCAP** is pleased to welcome its newest employees: Riley Caron, Custodian/Maintenance Asst; Alivia Dionne & Jaidyn Quimby, Teacher Aides; Tom Hunt, Kitchen Lead; Nick Johnson, Scheduler/Dispatcher; Robert Perks & Kenny Sincyr, KV Van Drivers.

**Central Maine Growth Council (CMGC)** is pleased to welcome Jeff Frank as the new Dirigo Labs Program Manager and Josh Devou as the new Economic Development Specialist.

Katherine Harvey and Alicia Vannah of **AYCC** were recently recognized by **Modern Woodmen of America** as Hometown Heroes for their outstanding dedication to supporting military veterans and strengthening our community. Great job!

**Peak Aesthetics** is proud to announce that staff member Amanda is now a certified DMK Skin Revision Therapist and Samantha is officially a certified ZO® Skin Health Specialist. Congratulations!

**United Way of Kennebec Valley** is thrilled to introduce two new dedicated individuals who have recently joined its team: Cormac Manning as Community Impact and Operations Assistant, and Natalie Labbe as Development Manager.

Valerie Lefebvre has joined **Bar Harbor Bank & Trust's** Waterville team as AVP, Branch Relationship Manager. Welcome, Valerie!

**Kennebec Regional Development Authority** proudly announces the hiring of Kristine Logan as its new executive director.



*Serving Maine Since 1947*

**Sheridan  
Construction**

Engineering  
Design - Build  
General Contracting  
Construction Management

Building on our promise

[WWW.SHERIDANCORP.COM](http://WWW.SHERIDANCORP.COM)

33 Sheridan Drive, Fairfield, ME 04937

(207) 453-9311



*Food and companionship  
enriching life*

[www.elanco.com](http://www.elanco.com)

Let Us Show You  
How to Earn More  
and Pay Less!

*New  
Dimensions*  
Federal Credit Union

Educate. Empower. Evolve.

Waterville • Winslow • Skowhegan  
[newdimensionsfcu.com](http://newdimensionsfcu.com)  
(800) 326-6190

# MEMBER NEWS

**United Way of KV** and **AYCC** launched the Family Futures Scholarship Program, an initiative designed to help parents pursue higher education while ensuring their children receive quality childcare and youth programming.

**Maine Development Foundation** received a \$500k Northern Regions Border grant toward \$651,449 to launch a 3-year pilot program providing technical assistance, community assessments and direct investments to four rural towns impacted by biomass mill closures.

**Amici's Cucina** proudly celebrated 15 years in business, honoring a legacy of quality cuisine, exceptional service, and continued support from the community.

**Rusty Lantern Markets** convenience stores announced a partnership with Bacio Cheese to provide additional fresh, made-to-order foodservice offerings for its customers.

**Central Maine Power** was recently recognized by Sweetser for its commitment to supporting mental health resources in Maine. It was awarded the Sweetser Star Corporate Partner Award.

Dept of Agriculture, Conservation and Forestry's Bureau of Parks and Lands announced the results of the 1<sup>st</sup> round of Maine Trails Program grants, marking a significant investment in trail access, connectivity, and outdoor recreation throughout the state. Of our members, winners included **Town of Oakland** – Madison Branch Rail Trailhead Parking (\$151,024) and **City of Waterville** – Quarry Road Trails Master Plan Phase 1 (\$249,046).

**Make Their Day PT** will begin offering wellness coaching in January as co-owner Holly Kiidli recently completed her wellness coaching certification.

**Thomas College's** 2025 Day of Giving secured donations from 960 unique donors (517 new donors) to total a whopping \$175K in funds to help fuel scholarships, campus programs, athletics, and countless opportunities that make a Thomas education possible.

# DECEMBER BAH



## Waterville Elks Lodge #905

76 Industrial Rd., Waterville



Proudly Sponsored By:



**Kennebec Savings Bank**



**CENTRAL MAINE POWER**

**Valley Beverage**

Beverage Sponsor

**THANK YOU TO ALL OF OUR 2025 BUSINESS AFTER HOUR HOSTS.**

### CENTURY 21 NASON REALTY, INC.



Residential | Seasonal | Commercial

11 Bay Street, Winslow, ME 04901

www.c21nason.com | 207.873.2119



Each Office Independently Owned & Operated.



Supporting the Waterville arts, culture and business community.



**Connected** credit union

THE POSSIBILITIES ARE ENDLESS WHEN YOU GET CONNECTED!

Local service right in your community. Become a member today!

85 Civic Center Dr. Augusta • 12 Monument St. Winslow  
connectedcreditunion.org



# MID-MAINE CHAMBER OF COMMERCE

50 Elm Street, Waterville, ME 04901

207-873-3315

[www.midmainechamber.com](http://www.midmainechamber.com)

## Where Does Your Chamber Stand on the Issues?

### 2026 Policy Positions

*Mid-Maine Chamber of Commerce is dedicated and committed to promoting, educating and advocating for business prosperity and regional economic improvement. Our mission involves advocating for public policy that will assist our region to prosper and grow. The Public Policy Committee has developed and implemented these policy positions for the Mid-Maine Chamber with the endorsement of its Board of Directors.*

*While it firmly believes in the effectiveness of these policies, it also acknowledges that reasonable people can disagree about policies and politics. It maintains that vigorous, but respectful, debate on political issues is a vital input to democratic government and civil society more generally. It does not support ad hominem attacks and the incivility that has crept into political discourse. Especially in the months following an election, it is critical that citizens engage with each other in good faith and without malice.*

*Moreover, Maine has an increasing number of ballot initiatives amending the Maine Constitution. Amending the Maine Constitution should be done cautiously and only with the public having a solid understanding of the changes and their effect. The Maine Constitution is a powerful document which supersedes all laws passed by the Maine Legislature and Ordinances passed by cities and towns. An amendment can increase or decrease the power of government.*

*Lastly, Mid-Maine Chamber cautions legislators regarding the overuse of concept drafts, and recommends ample time being allowed for language review when scheduling committee hearings on these bills.*

## Education & Workforce Development

Educational opportunity and achievement are essential to the region's economic health and quality of life. Without an educated workforce and diligent efforts to develop the pipeline of workers that businesses need to compete globally, our competitiveness for quality workers will diminish. Our region struggles to replace the high rate of retiring workers with a qualified workforce needed, as our college students are leaving the State for higher-paying jobs. To that end, the Chamber supports:

- Working the State of Maine's Economic Development strategy to attract and retain workforce.
- Aligning education opportunities with private, public and non-profit workforce needs to attract skilled workers to mid-Maine.
- Promoting and expanding quality early childhood through twelfth grade curriculum and programs (including public, private and charter schools).
- Encouraging schools to share and combine resources so that more opportunities are offered to students in a safe and healthy environment.
- Promoting mid-Maine as a higher education hub.
- Increasing high school and higher education going/attendance and completion rates through financial aid awareness, expanding transfer agreements, dual and concurrent enrollment classes and Career and Technical Education (CTE).
- Encouraging math (preferably at least 3 years) and writing taught throughout high school so that students are prepared to enter the workforce and/or college.
- Promoting development of a regional, long-term education strategy that sets timelines and outcomes including specific training of pandemic procedures/protocols tailored per profession.
- Encouraging Career Centers, Local Workforce Investment Boards, Adult & Alternative Ed., and educational institutions to work hand-in-hand in a coordinated manner.
- Policies that encourage and increase in-migration of workforce including attracting more people to become year-round residents.
- Establishing clearer pathways to citizenship.
- Recognizing that our workforce is aging and that in order for our businesses to survive and/or thrive, transitioning workforce must replace our retiring workers.
- Oppose further escalations of the minimum wage.

# Health Care

The cost of health care remains at the top of the list of concerns to Mid-Maine Chamber members.

Our Chamber supports efforts that:

- Continue to advance the quality of care and improve the health of Maine's population to reduce the overall cost of health care, including prescription drugs, to advance the goal of reducing the cost of health insurance for employers and employees.
- Develop policies to sustain access to the full continuum of health care services in Maine communities.
- Expand broadband capacity to all Maine communities, supporting telehealth and other health care technology-based services.
- Effectively implement sustainable comprehensive solutions to address the mental health and substance use disorder crisis.
- Address the critical demand for sustainable comprehensive elder care services that workers and their families rely upon to support older adults.
- Address the critical demand for education and training of the health care workforce including EMS to meet current and future needs.

# Transportation

Transportation is a key component of economic growth, and as such the Chamber supports making investments in our transportation infrastructure a priority. To that end, the Chamber supports:

- Advocating for bridge upgrade/replacement on Trafton Road.
- Better maintained roads and bridges (upgraded infrastructure) working with DOT, municipalities, etc. particularly on communication to share with membership.
- Public transportation, such as KVCAP's transportation system, that serves the needs of the region's population of all ages, enabling them to live, work and have access to our downtowns and centers of commerce.
- Advocacy towards fully linking the KVCAP bus system, i.e. Waterville, Skowhegan & Augusta transit.
- Development of a regional airport; support of passenger and freight railroad systems from Portland to Bangor via the Lewiston line.
- Policies that encourage public and private infrastructure investments in transportation and logistic

# Telecommunications

Broadband capacity is now a critical component to economic development, stability and growth within the region. This technology holds the promise of eliminating geography as a concern with respect to our economic growth. Further, the industry mix here – research labs, factories, libraries, educational institutions, and biomedical firms – is such that strong broadband connections are a necessity for the mid-Maine region to be successful.

To that end, the Chamber supports:

- Public policies that will allow for greater penetration of high-speed broadband in our market, especially ultra-high speed connections used by technology companies whereas all of our students and telemedicine have to have increased access/better broadband.
- Economic development strategies that target companies with a high demand for bandwidth and to better attract technology firms to our region.
- Policies that encourage public and private infrastructure investments in telecommunications that support economic growth focusing on unserved areas.
- Preservation and enhancement of incentives for continued private broadband investment and investment in important broadband adoption initiatives.
- Improved wireless (cellular) coverage to rural areas.

## Energy

Mid-Maine Chamber endorses an energy policy that realizes the goals of lowering the price of electricity, lowering the cost of energy, and reducing greenhouse gas emissions in a way that results in cost effective and sustainable solutions. Specifically, the Chamber:

- Opposes efforts that attempt a public takeover of private power companies.
- Champions efforts to relicense Kennebec River dams.
- Supports regulatory reforms that lower electric transmission/delivery costs for businesses as well as promotion of local distributed generation such as community solar and industrial co-generation.
- Supports research and development of cost-effective sustainable alternative energy sources including, but not limited to, domestic solar.
- Supports continued implementation of cost-effective energy conservation and efficiency policies, including those techniques and strategies supported by the EfficiencyMaine Trust.
- Champions increased utilization of renewable energy sources such as hydropower greater than 100 megawatts that will achieve Northeast Goals of increased utilization of non-fossil energy sources.
- Supports reducing the price of electricity by increasing natural gas pipeline capacity into New England by 1-2 billion cubic feet per day, as natural gas can be a useful bridge fuel to renewables.

## Taxes

The tax burden on Maine businesses is too high and the structure here discourages growth. Mid-Maine Chamber supports:

- Taking no action that would increase property taxes.
- Opposing further escalations of the minimum wage.
- State of Maine's tax laws conforming with Federal tax laws.
- A tax code that is easy for businesses to understand and comply with.
- Continued scrutiny of government spending and looking for ways for government to be more efficient.
- Opposition to local option sales tax initiatives.
- Reducing tax rates at every level of government in order to promote more retained earnings for

## Regulatory Reform & Policy

Mid-Maine Chamber supports State and Local policies designed to expand opportunities and prosperity for our region. Our Chamber supports:

- Policies that advance home ownership and create new housing stock.
- Regulations written in terms that businesses can easily understand, and regulators can consistently interpret and implement.
- Regulatory reforms that remove barriers to job growth and retention without compromising public health, environmental and consumer protection.
- Any changes in regulations to be carefully reviewed to see what increased costs they may place on businesses versus the benefits the regulation provides.
- Government policies that permit individual incomes to grow faster than the rate of government spending.
- Policy/regulation/capacity that minimizes the obligation of Maine taxpayers with the issuance of government debt.
- Policy/regulation/capacity that creates a positive investment climate.
- U.S. re-evaluating its free trade agreements to insure that they are benefiting Maine people.
- Re-evaluation of the referendum process in Maine and not use ex post-facto.
- Promoting and increasing public access to outdoor recreational opportunities including lakes, rivers, trails, parks, ski areas, etc.
- Preserving the constitutionally-protected right to freedom of association to advance their common interests. Caution and due care should be used before changing election laws.

## 2026 Board of Directors

**Gary Poulin, chair\***

Mix-Maine Media

**Karen Normandin, 1st vice chair\***

Kennebec Valley Community College

**Tom Shupe, 2nd vice chair\***

Dirigo Wealth Management

**Martha Wentworth, treasurer\***

Allen Insurance & Financial

**Larissa Larrabee, director-at-lg\***

Huhtamaki

**Shawn Michaud, past chair\***

Seacoast Security

**Linanne Gaunce**

Central Maine Motors Auto Group

**Mark Bradford**

Valley Beverage

**Katherine Harvey**

Alfond Youth & Community Center

**Matthew Hunt**

A2Z Computing Services

**Jamie Plourde**

Coldwell Banker Plourde Real Estate

**Kristian Suttie**

Central Maine Power Co.

**Brian Bowman**

Bowman Constructors

**Dan Wildes**

Sheridan Construction

**Robin Getchell**

The Robin's Nest

**Dee-Anna Rogers**

NewsCenter Maine

**Nathan Howell**

MaineGeneral Health

**Churchill Elangwe-Preston**

Mbingo Mountain Coffee

**Mickey Wing**

Casella Waste Management

**Darlene Ratte**

Best Western Plus

**Nancy Smith-Fotter**

Camden National Bank

**Garvan D. Donegan, ex-officio**

Central Maine Growth Council

**Kimberly N. Lindlof, president/CEO\***

Mid-Maine Chamber of Commerce

\* executive board members

Mid-Maine Chamber of Commerce  
50 Elm Street  
Waterville, ME 04901

PRE-SORTED STANDARD

U.S. POSTAGE

PAID

PERMIT #146

Waterville, ME 04901

## Contact Your Representatives

### Regional State Representatives

**Rep. Benjamin C. Hymes — District 38**

318 Birches Rd., Waldo, ME 04915  
Benjamin.Hymes@legislature.maine.gov  
(207) 808-3413

**Representative Sharon C. Frost—District 58**

8 Dane Lane South, Belgrade, ME 04917  
sharonfrost87@gmail.com  
Sharon.Frost@legislature.maine.gov  
(207) 458-1837, (207)242-6079

**Representative Alicia Collins — District 61**

2532 W. River Rd., Sidney, ME 04330  
Alicia.Collins@legislature.maine.gov  
(207) 751-4736

**Representative Katrina Smith—District 62**

627 Chisholm Pond Rd., Palermo, ME 04354  
katrinaformaine@gmail.com  
Katrina.smith@legislature.maine.gov  
207-230-9583

**Representative Paul Flynn —District 63**

78 Bessey Ridge Rd., Albion, ME 04910  
Paul.flynn@legislature.maine.gov  
207-314-5525

**Representative Flavia M. DeBrito—District 64**

32 Boutelle Ave., Waterville, ME 04901  
Flavia.DeBrito@legislature.maine.gov  
(207) 660-7212

**Representative Cassie Julia—District 65**

73 First Rangeway, Waterville, ME 04901  
Cassie.julia@legislature.maine.gov  
Cell: 207-649-5110

**Representative Bob Nutting — District 66**

P.O. Box 100, Oakland, ME 04963-0100  
100speaker@gmail.com  
(207) 629-7035

**Representative Shelley Rudnicki—District 67**

211 Norridgewock Rd., Fairfield, ME 04937  
Shelley.Rudnicki@legislature.maine.gov  
(207) 314-6898

**Rep. Amanda Collamore—District 68**

173 Library St., Pittsfield, ME 04967  
Amanda.Collamore@legislature.maine.gov  
(207) 679-7305

**Rep. John E. Ducharme III — District 71**

34 Heald St., Madison, ME 04950  
Jack.Ducharme@legislature.maine.gov  
(207) 431-0775

### Regional State Senators

**Senator Bradlee Farrin—District 3**

P.O. Box 687, Norridgewock, ME 04957-0687  
Bradlee.Farrin@legislature.maine.gov  
(207) 634-3074

**Senator Russell Black—District 5**

123 Black Rd., Wilton, ME 04294  
Russell.Black@legislature.maine.gov  
(207) 491-4667

**Senator Glenn Curry (Chip) —District 11**

13 Parkside Lane, Belfast, ME  
Glenn.Curry@legislature.maine.gov  
(207) 287-1430

**Sen. Dick Bradstreet Senate — District 15**

3 State House Station, Augusta, Maine 04333  
Cell: (207) 861-1657

**State House:** (207) 287-1505

**Email:** dick.bradstreet@legislature.maine.gov

**Senator Scott Cyrway— District 16**

363 Albion Rd., Benton, ME 04901  
Scott.cyrway@legislature.maine.gov  
scottcyrway@uninets.net  
(207) 453-7787

### U.S. Congressional Delegation

**Senator Susan Collins—statewide**

(207) 622-8414  
www.collins.senate.gov

**Senator Angus King—statewide**

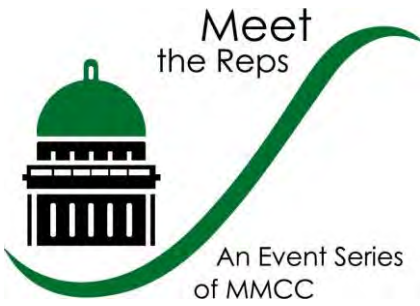
(207) 622-8292  
www.king.senate.gov

**Congresswoman Chellie Pingree—1st District**

(207) 873-5713  
www.pingree.house.gov

**Congressman Jared Golden—2nd District**

(207) 784-0768  
www.golden.house.gov



Co-Hosted  
by:



We invite you to join us for

**MEET THE REPS**

**THURSDAY, JANUARY 8**

**5:30-7:00 p.m.**

**BRICKS Co-Working Space**

**Hathaway Bldg., 10 Water St.,  
Waterville**

Don't miss out! This event will feature the Maine State Chamber advocacy team of Patrick, Ashley, and Linda, who will provide an overview of the upcoming legislative session.



Beverages and light refreshments will be served. There is no fee for this event. However, we request that you register to aid in planning.



To register, visit: [www.midmainechamber.com](http://www.midmainechamber.com), or email [jamie@midmainechamber.com](mailto:jamie@midmainechamber.com).

Thank you to our Meet the Reps Sponsors:





# ATTENTION



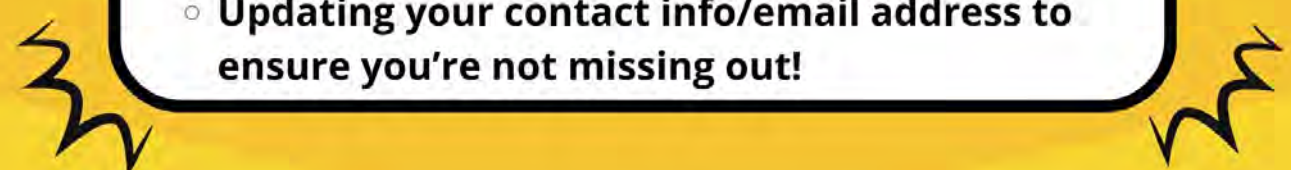
Have you taken full advantage of all the benefits available to you and your organization?

**3 things you can do right NOW to maximize your membership:**

**Claim and update your business listing on the Chamber website to boost your visibility.**

**Register for upcoming Chamber events to connect with other local professionals and grow your network.**

**Take advantage of member deals by:**

- Reviewing discounts offered when using your Chamber Advantage Discount Card:  
<https://midmainechamber.com/member-center/advantage-discount-cards>
  - Adding **HOT DEALS** and **JOB POSTINGS** to our website
  - Updating your contact info/email address to ensure you're not missing out!
- 

For more information regarding membership, and maximizing your Chamber benefits, contact: Sabrina Gormley, Marketing & Membership Director,  
[sabrina@midmainechamber.com](mailto:sabrina@midmainechamber.com)—873-3315

## Business Breakfast



**Andrew J. Wells**

**Attorney**

**Preti Flaherty**

**When:**

**Thursday, January 8**

**7:15 - 9:00 a.m.**

**Where:**

**Best Western Plus –  
375 Main St., Waterville**

## **Affordable Care Act (ACA) and Big Beautiful Bill Update**

Join us for another informative presentation that benefits you and your organization.

PretiFlaherty Attorney Andrew Wells will explore the impacts of the Affordable Care Act and the One Big Beautiful Bill Act tax changes on your individual businesses.

As more of the regulations tied to these initiatives roll out, your organization needs to be aware of the implications for your particular industry.

Please come prepared with your questions for this knowledgeable individual.

January Business Spotlighter Booth opportunities are available.

Please contact Cindy for more information.

[Cindy@midmainechamber.com](mailto:Cindy@midmainechamber.com) | 873-3315

**Pre-register today. Cost per person: \$28 for members,**

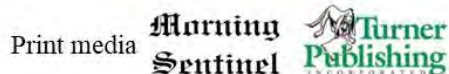
**\$34 at the door and for non-members. Registration includes breakfast.**

**TO REGISTER: [cindy@midmainechamber.com](mailto:cindy@midmainechamber.com), [www.midmainechamber.com](http://www.midmainechamber.com) or 873-3315.**

**Thank you to our Major Sponsors:**



**Brookfield  
Renewable U.S.**





2026

Best Western Plus - Colby/Coburn Rm.

375 Main St., Waterville

7:15 a.m. to 9:00 a.m.

- January 8:** **Affordable Care Act (ACA) and Big Beautiful Bill Update.** PretiFlaherty Attorney Andrew Wells will explore the impacts of the Affordable Care Act and OBBA tax changes on your individual businesses as more details of these programs are outlined.
- February 12:** **Creating Accessible Digital Content by Maine CITE.** Maine CITE Director Leilani Carlson will share how to create accessible social media content— posts, images and videos—that can be used by everyone, regardless of learning, physical, or vision limitations. Includes the new Web Content Accessibility Guidelines including making digital content also accessible to everyone, especially those with disabilities.
- March 12:** **Encouraging Youth Engagement in the Workforce.** This presentation will consist of a panel addressing youth engagement in the workforce, through internships and other programs available. Presenters will include State of Maine Career Exploration Manager Karen Morin; Director of Apprenticeship & Strategic Partnerships, Maine Dept. of Labor, Joan Dolan, and President & CEO of Jobs for Maine Graduates, Craig Larrabee.
- April 9:** **Artificial Intelligence: Practical AI for Real Business Growth.** Shawn Packard of Red Claw Media will share everyday examples and demos of AI components that could be useful in your organization. He will show how to use existing tools in an interactive setting. Everyone knows that AI exists, but it could be better utilized in your individual business, helping promote growth with smart AI content.
- May 7:** **How Will Changes in Paid Family Medical Leave and Other HR Changes Impact Your Business?** CEO/ Owner of Career Management Associates, David Ciullo and Employment Attorney Peter Lowe, partner at Brann & Isaacson, will offer updates of the paid Family Medical Leave Act and additional HR law topics with impacts for your organization.
- Sept. 10:** **From Stress to Success: Reimagining Performance & Development.** Director of Talent, Diversity, Inclusion & Belonging for Bangor Savings Bank, David Pease, will explore how stress can be transformed from a barrier into a powerful signal for change in your organization. Integrating human-centered strategies like coaching, psychological safety and strengths-based development will foster environments where people thrive, not just survive. Attendees will leave with practical tools for performance conversations, reduction of burnout, and the building of cultures of belonging and resilience.
- Oct. 1:** **Legislative Topic: TBD.**
- Nov. 12:** **Amplifying Your Brand Through Storytelling.** MaineGeneral Health Chief Marketing & Comm. Officer, Nicole McSweeney, and Dir. of Marketing & Communications, Joy McKenna share how authentic storytelling helps to deepen your connection to customers, inspire loyalty and reinforce your company's values. Learn about the impact of storytelling and how to find and share stories that can elevate your brand and reputation.
- Dec. 10:** **Employee Connections With Non-Profits Enhance Involvement.** Central Maine Power Community Relations Manager, Greg Thompson will share tips on the importance of allowing employees to engage with non-profits. Employee satisfaction is enhanced when your employees feel involved, empowered and productive, often by assisting with non-profit projects and organizations.

Cost per person: \$28 members; \$34 at the door and non-members.

Mid-Maine Chamber of Commerce, 50 Elm Street, Waterville, ME 04901

TO REGISTER: [www.midmainechamber.com](http://www.midmainechamber.com) PHONE: 873-3315 or Email: [Cindy@midmainechamber.com](mailto:Cindy@midmainechamber.com)

(PLEASE NOTE: Cancellations must be two (2) business days prior to the event to avoid being charged.)



Proudly sponsored by:



**Brookfield**  
Renewable U.S.



Print media  
sponsors

**Morning**  
**Sentinel**



Radio  
sponsor



Video  
sponsor



# FOR LEASE

PRIME LOCATIONS NEAR EXIT 127

350 KENNEDY MEMORIAL DRIVE, WATERVILLE



295 KENNEDY MEMORIAL DRIVE, WATERVILLE



- COMPETITIVE LEASE TERMS
- PREMIUM RETAIL AND OFFICE SPACE  
FROM 200 TO 7,000 SQ. FT.
- MULTIPLE FLOOR PLAN OPTIONS
  - PLENTY OF PARKING

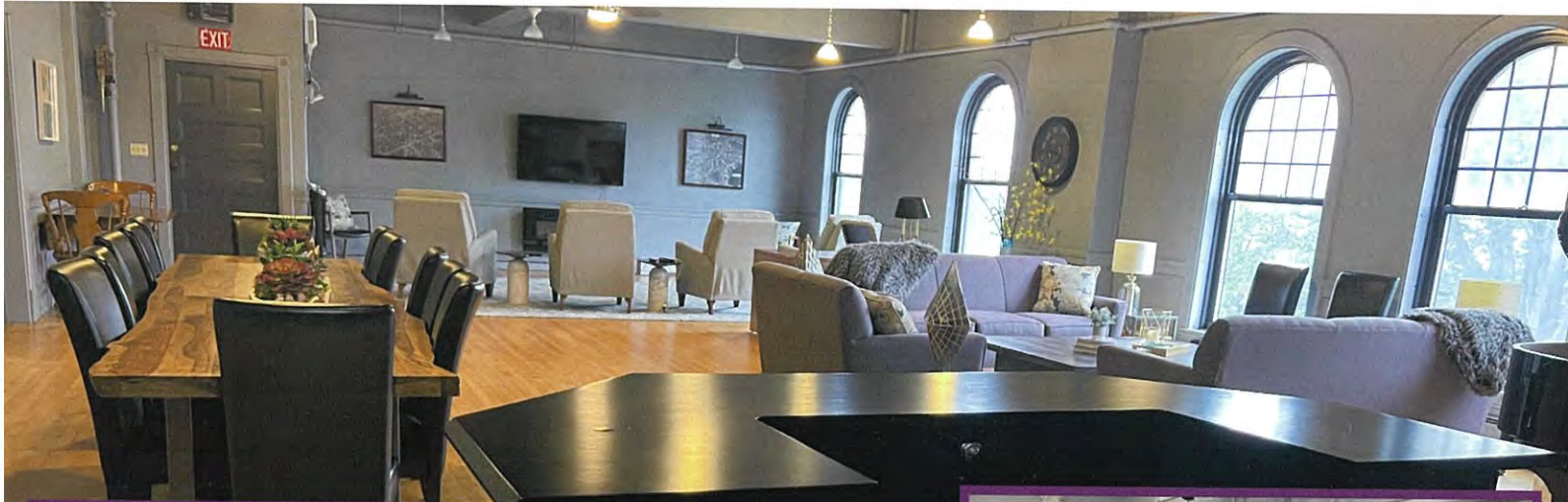
FOR MORE INFORMATION, CALL (207) 616-6881  
OR EMAIL [CALLIE@PJMPROP.COM](mailto:CALLIE@PJMPROP.COM)

# EXCLUSIVE PRIVATE EVENT & MEETING SPACE

## A Premier Setting in Downtown Waterville for Gatherings up to 40 Guests

Looking for a **unique, sophisticated space** to host your next private event, executive meeting or intimate celebration?

Our exclusive venue is designed for those who appreciate **privacy, elegance and excellence.**



### *Elevate Your Next Gathering*

Make your event unforgettable in a setting where every detail is designed with distinction.

**RESERVE TODAY - AVAILABILITY IS LIMITED**

**\*\*\* Overnight Rentals Also Available – 3 Night Minimum Stay \*\*\***

**FOR MORE INFORMATION, CALL (207) 616-6881**

**OR EMAIL [CALLIE@PJMPROP.COM](mailto:CALLIE@PJMPROP.COM)**

Keep the fun coming with business and fun, after hours!



MaineGeneral Health



Join us for our January Business After Hours:  
**WEDNESDAY, January 21 — 5:30 - 7 p.m.**

**Hosted by**

**MaineGeneral Medical Center —  
Thayer Center for Health**

**149 North Street, Waterville**

**Great food, great networking, 50/50, and door prizes**

**Proudly Sponsored By:**



**Beverage Sponsor**



# 2026



**Business After Hours:** A great place to network and market your business.

Events are hosted, or co-hosted, by Chamber members in our region.

Hors d'oeuvres, beer, wine, and other beverages are available, or you could win the 50/50 raffle and fabulous door prizes donated by area businesses. Be sure to bring your business cards!

**Events are held on Wednesdays, from 5:30 - 7 p.m.**

- |                      |                                                                                                                        |
|----------------------|------------------------------------------------------------------------------------------------------------------------|
| <b>January 21:</b>   | <b>MaineGeneral Medical Center-Thayer Center for Health</b><br>149 North Street, Waterville                            |
| <b>February 25:</b>  | <b>Small Tech Business BAH - Held at</b><br>Kennebec Valley Comm. College, Western Ave., Fairfield                     |
| <b>March 25:</b>     | <b>Snow Pond Center for the Arts – Co-Hosted with KV Chamber</b><br>8 Golden Rod Lane, Sidney                          |
| <b>April 15:</b>     | <b>Summit Natural Gas</b><br>Winslow Location—TBD                                                                      |
| <b>May 13:</b>       | <b>Skowhegan Savings Bank</b><br>92 Main Street, Fairfield                                                             |
| <b>June 17:</b>      | <b>Dirigo Wealth Management</b><br>46B First Park Drive, Oakland                                                       |
| <b>July 15:</b>      | <b>Allen Insurance &amp; Financial</b><br>51 Main Street, Waterville                                                   |
| <b>August 19:</b>    | <b>Prime Financial Inc. / Children’s Discovery Museum</b><br>7 Eustis Parkway, Waterville                              |
| <b>September 16:</b> | <b>Golden Pond Wealth Management / Waterville Opera House</b><br>Paul J. Schupf Art Center, 93 Main Street, Waterville |
| <b>October 14:</b>   | <b>Temple Academy</b><br>60 West River Road, Waterville                                                                |
| <b>November:</b>     | <b>No Event</b>                                                                                                        |
| <b>December 16:</b>  | <b>Mount Merici Academy</b><br>18 Mount Merici Avenue, Waterville                                                      |



PROUDLY SPONSORED BY:



Beverage sponsor



# MAINE STATE CIVICS BEE

## CALLING ALL MAINE

### MIDDLE SCHOOL STUDENTS

FLEX YOUR CIVICS KNOWLEDGE

LEARN MORE ABOUT THE CIVICS BEE!

MAINE  
STATE  
CHAMBER  
of  
COMMERCE



Mid-Maine  
Chamber of Commerce  
Making the Difference

1st Place

**\$1,000\***

(plus a potential \$5,000\*\*  
donation to your school!)

2nd Place

**\$500\***

3rd Place

**\$250\***



Essay  
Application  
Guide

[WWW.NATIONALCIVICSBEE.COM](http://WWW.NATIONALCIVICSBEE.COM)



6TH, 7TH, AND 8TH GRADERS:

# How can you make a difference in your community?

Start with an essay to enter the 2026 National Civics Bee® [nationalcivicsbee.org](https://nationalcivicsbee.org)

## How it Works

If selected, you will be invited to participate in a live competition near you. Finalists at regional competitions advance to state competitions, and finalists at state competitions advance to the National Championship in Washington, D.C.!

Prizes include cash awards, trophies, recognition, and a \$100,000 contribution to a 529 plan for the National Champion.

In 2026, if you win your state competition, your school could receive a \$5,000 donation.

Students who participate in the National Civics Bee strengthen their civics, writing, and public speaking skills, and form friendships with other young leaders along the way.



Emily Brubaker  
2024 National  
Civics Bee Champion



### Write an essay proposing your ideas for improving your community.

- Use the [2026 Essay Application Guide](#) to find this year's official prompt, judging rubric, writing tips, and submission instructions.
- Read the [Contest Rules](#). Public, private, charter, and homeschool students in grades 6–8 who reside in participating states are eligible.



### Submit your essay by February 3, 2026.

- You'll need permission from a parent or guardian to apply.
- Create an account for the online application portal: <https://my.reviewr.com/NationalCivicsBee/site/NationalCivicsBee2026>
- Submit your essay application by 11:59 p.m. on Tuesday, February 3, 2026 (Hawaii Standard Time).



### What if you're chosen to advance?

You'll be invited to compete at the nearest live bee. The winners of each round advance to the next, and the winner from each state competition receives a paid trip to Washington, D.C., to compete in the National Championship in Fall 2026.



To help prepare, finalists receive a special study guide and complimentary access to Khanmigo®, Khan Academy's AI-powered online tutor.

## PRIZES\*

### NATIONAL CHAMPIONSHIP

1st Place	<b>\$100,000*</b> 529 plan contribution
2nd Place	<b>\$25,000*</b>
3rd Place	<b>\$15,000*</b>

### STATE FINALS

1st Place	<b>\$1,000*</b> Plus a potential \$5,000** donation to your school!
2nd Place	<b>\$500*</b>
3rd Place	<b>\$250*</b>

### REGIONAL BEES

1st Place	<b>\$500*</b>
2nd Place	<b>\$250*</b>
3rd Place	<b>\$125*</b>

\*Amounts shown are the anticipated minimums to be awarded. All amounts are cash prizes except as indicated above. Finalists for each round should reference their respective Contest Rules for full prize information.

\*\*Full details on the entry procedure are described in the Contest Rules, which will be available on September 8, 2025 upon contest opening.

# EVENTS CALENDAR

- Jan. 3 & 4:** **There's Still Tomorrow, 10 AM**  
Maine Film Center, 93 Main St., Waterville
- Jan. 8:** **MMCC Business Breakfast: ACA & Big Beautiful Bill, 7:15 AM**  
Best Western Plus, 375 Main St., Waterville
- Jan. 8:** **MMCC/State Chamber Regional Meet the Reps, 5:30 PM**  
Bricks Co-Working & Innovation Space, 10 Water St., Waterville
- Jan. 9:** **Concert: EagleMania, 8 PM**  
Waterville Opera House, 1 Common St., Waterville
- Jan. 10:** **Met Opera Encore: Andre Chenier (Giordano), 12:55 PM**  
Paul J. Schupf Art Center, 93 Main St., Waterville
- Jan. 10:** **Pihcintu Multicultural Girls Chorus, 3 PM**  
Waterville Opera House, 1 Common St., Waterville
- Jan. 14:** **2026 MaineBiz Five on the Future Forum**  
DoubleTree, 363 Maine Mall Rd., South Portland, ME
- Jan. 17:** **The Wizard of Oz, 2 PM**  
Waterville Opera House, 1 Common St., Waterville
- Jan. 17:** **The Belle Bus—Baddie Bowling Trip, 3 - 5:30 PM**  
Pickups in Belgrade and Augusta
- Jan. 21:** **MMCC BAH: MaineGeneral –Thayer Health Ctr., 5:30 - 7 PM**  
Thayer Health Center, 149 North St., Waterville
- Jan. 22:** **Dirigo Labs Speaker Series-Jonathan Godbout, 5:30 - 7 PM**  
Bricks Co-Working & Innovation Space, 10 Water St., Ste. 110 Waterville
- Jan. 24:** **The Belle Bus—Small Business Shop Hop, 9 AM - 2 PM**  
Pickups in Oakland and Belgrade
- Jan. 24:** **3D Printed Jewelry, 11 AM - 2 PM**  
Ticonic Class, Paul J. Schupf Art Center, 93 Main St., Waterville
- Jan. 24:** **Community Maker Days, 10 AM - 4 PM**  
Paul J. Schupf Art Center, 93 Main St., Waterville
- Jan. 26:** **Waterville Elks #905 BINGO, 6 PM**  
Elks Banquet Center, 76 Industrial Rd., Waterville
- Jan. 28:** **Teen Clay Club, 3 - 5 PM**  
Paul J. Schupf Art Center, 93 Main St., Waterville
- Jan. 28:** **KV Connect's "Channel Your Flannel," 5:30 - 7 PM**  
The Pointe Afta, 252 China Rd., Winslow
- Jan. 30 & 31:** **The NERD, 7:30 PM**  
Waterville Opera House, 1 Common St., Waterville

For assistance adding your events to the Chamber calendar, contact Sabrina:  
[Sabrina@midmainechamber.com](mailto:Sabrina@midmainechamber.com)

# DECEMBER BBS



Sponsored by:



Interested in being a Business Breakfast  
Spotlighter in 2026?

[Cindy@midmainechamber.com](mailto:Cindy@midmainechamber.com)

Energy you can  
**count on.**

SummitNaturalGasMaine.com

6 Jefferson St., Waterville ME  
(207) 873-6228

**PRIME FINANCIAL INC.**

753 West River Rd., Waterville, ME  
T: 207.877.9450  
E: [mike@primefinancial.biz](mailto:mike@primefinancial.biz)  
W: [primefinancial.biz](http://primefinancial.biz)

**Michael Cleary, LPL Financial Advisor**

Unlock Your Financial Potential with Prime Financial, Inc.

- Personalized Financial Solutions
- Expert Advice Tailored to your Goals
- Secure Your Future with Confidence

Securities and Advisory | Services offered through LPL Financial, a registered Investment Advisor | Member FINRA/SIPC

# RIBBON CUTTINGS

Sponsored by:



**Gallant Funeral Home**  
10 Elm St., Waterville  
(207) 873-3393



Sponsored by:



**Kringleville ADA Ramp Celebration**  
Castonguay Square, Waterville



## MMCC DIRECTOR'S LUNCHEON



Lunch at The Lion's Den

Director of the Year-Matt Hunt



### New Directors

L to R: Katherine Harvey, Mickey Wing, Nancy Fotter, Matt Hunt, Churchill Elangwe-Preston, Darlene Ratte



Passing the gavel to the new Board Chair- Gary Poulin



2026 Board of Directors

## KV CONNECT



## join KV CONNECT



### BENEFITS

*KV Connect is a group of tomorrow's community leaders! Young Professionals from 21-45 living and working in Central Maine with a passion for making Central Maine the best place to live, work and play **JOIN US TODAY!***

### EXPERIENCE

*KV Connectors have unique opportunities to connect, grow, learn, and impact Central Maine. Some past events include:*

- Yoga in the Park
- Leadership Luncheons
- Nine & Wine
- Pints with a Purpose
- Channel your Flannel

### WHY JOIN?

*When you become part of KV Connect you have the opportunity to grow professionally and personally, through leadership programming, networking, and local connections from Waterville to Skowhegan.*



### TESTIMONIAL

**NIKKI WILLIAMS, 211 MAINE**

*Mid-Maine has something for everyone. Whether you want to enjoy the outdoors, attend a concert, or go to dinner, you can do it all right here. KV Connect capitalizes on these opportunities for young professionals by organizing fun and rewarding ways of being involved!*



# COMMUNITY ENGAGEMENT

Channel your  
**FLANNEL**

WED. JAN. 28 | 5:30-7PM | THE POINT AFTA

BENEFITING:

PRESENTED BY:  
COMMUNITY CONNECTIONS  
KV CONNECT

KEEP ME warm  
+ = ❤️  
Thank you for spreading the warmth.

SPONSORED BY:  
Ameriprise Financial

WWW.KVCONNECT.ORG

LEARN MORE  
QR CODE

**THE NERD**

BY LARRY SHUE

January 30, 31 & February 6, 7 at 7:30pm  
February 1, 8 at 2pm  
Waterville Opera House  
This event is eligible for the Youth Arts Access Fund.

**NIGHT SKIING SOCIAL**  
THURSDAY, FEB. 12  
QUARRY ROAD  
6-9 P.M.

JOIN KV CONNECT FOR A YOUNG PROFESSIONAL'S AFTER-HOURS

DOWNHILL, CROSS COUNTY, SNOWSHOE SMORES AT THE FIREPIT

SAVE THE DATE!

SEE YOU IN THE YURT!

WWW.KVCONNECT.ORG

KV CONNECT  
QR CODE

**DIRTY DOG MUD RUN**

Sunday, April 19 @ Thomas College

**MAINE TECHNOLOGY GROUP**

Experience IT Differently!

CLOUD SOLUTIONS  
BUSINESS SOLUTIONS  
MANAGED IT SERVICES  
CARRIER SERVICES

120 Augusta Rd • Winslow, ME  
(207) 692-0955  
www.mainetechgroup.com

**ADVANCE 1**  
CLEANING & DISASTER RESTORATION

**Office Cleaning**  
Customized to Meet Your Needs!  
Daily, Weekly, Or Monthly

- Window Washing
- Dusting
- Bathroom Cleaning
- Vacuuming
- Sweeping / Mopping Floors

207-873-1241 - www.advance1clean.com

**SILVER STREET Tavern**

2 Silver Street, Waterville ME

**KENNEBEC VALLEY COMMUNITY COLLEGE**  
YOUR BRIDGE TO A BRIGHTER FUTURE

For more information visit  
kvcc.me.edu

NEW LOOK - SAME GREAT EDUCATION

## MEMBER SPOTLIGHT: Kennebec Valley Community College

### Spotlight on Affordability

The Maine Free College Scholarship has opened doors for Maine students by making community college more accessible, including recent graduates through the Class of 2025. At KVCC—where tuition is the lowest in New England—many students can cover their full cost through grants and aid, easing financial pressure. Even as the scholarship’s future is uncertain, KVCC remains one of the region’s most affordable and supportive options for higher education.



[www.KVCC.me.edu](http://www.KVCC.me.edu)

Admissions: (207) 453-5822

General Information: (207) 453-5000

### Why Students Choose KVCC:

**Affordable Education:** KVCC’s low tuition and generous financial aid help many students start or continue their education with little to no debt, making college truly accessible.

**Small Class Sizes:** Students learn in close-knit classes where instructors know them by name, creating strong connections, active engagement, and personalized support.

**Supportive Learning Environment:** With tutoring, advising, career counseling, and wraparound support, KVCC is dedicated to keeping students on track, and its faculty and staff take pride in guiding them toward success.

**Flexible, Career-Focused Programs:** KVCC offers programs that lead to in-demand careers in fields like healthcare, trades, business, and technology, and its transfer agreements with four-year colleges make continuing education seamless.

**Local Connections and Real-World Experience:** Through strong partnerships with local employers, KVCC provides students with internships, clinical placements, apprenticeships, and job opportunities, giving them the hands-on experience they need to enter the workforce confident and career ready.

**Convenient Housing:** Now available at Best Western Plus in Waterville with shuttle service, providing great accessibility for students.

KVCC is a top choice for students seeking affordability, strong support, and clear pathways to meaningful careers or further education. Whether students plan to enter the workforce or transfer to a four-year college, KVCC provides a solid foundation for success.



**PHARMACY**  
**SAVAGES DRUG**

FAIRFIELD PHARMACY (207)453-4431  
OAKLAND PHARMACY (207)465-4440  
UNITY PHARMACY (207)466-2000

**BUDDIES GROCERIES**  
**IGA**  
207-465-2621  
43 Main Street • Oakland  
[SavagesDrug.com](http://SavagesDrug.com)

**Workplace Health** MaineGeneral Medical Center

- Injury treatment & management
- Employee wellness
- Drug & alcohol testing
- DOT physicals

Augusta — 621-7550    Waterville — 872-4260

Visit us at [workplacehealth.maine-general.org](http://workplacehealth.maine-general.org).



**Quality and Value Since 1912**  
[www.hamelinfurniturecompany.com](http://www.hamelinfurniturecompany.com)

**Hamelin Furniture Co.**  
CORNER WESTERN AVE. & SOUTH ST. WATERVILLE, MAINE  
872-8433

*Disclaimer: Mid-Maine Chamber’s INTOUCH newsletter is published monthly as a benefit to members and affiliates. All member news is compiled and submitted solely by our members; therefore, we reserve the right to omit and/or edit as appropriate and cannot guarantee complete accuracy of all announcements. Sponsorship inserts do not necessarily reflect the position of Mid-Maine Chamber of Commerce.*